

Deep Purple  
Black Night

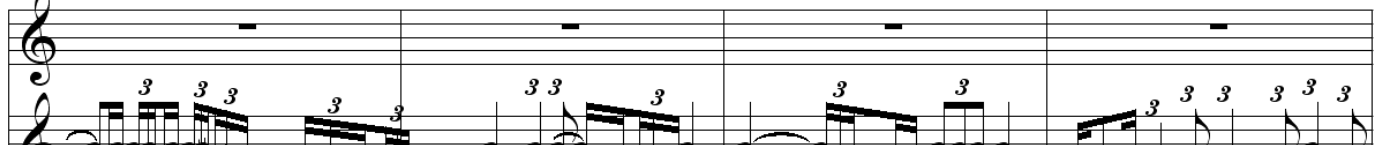
[INTRO]



[VERSO I]



[SOLO]



[INTRO] x2

[VERSO I]

Black night is not right,  
i don't feel so bright,  
i don't care to sit tight.  
maybe i'll find on the way down the line  
that i'm free, free to be me.  
black night is a long way from home.

[INTRO] x2

[VERSO I]

i don't need a dark tree,  
i don't want a rough sea,  
i can't feel, i can't see.  
maybe i'll find on the way down the line  
that i'm free, free to be me.  
black night is a long way from home.

[PRIMER RENGLON DE VERSO I] x3

[ULTIMOS 2 TIEMPOS SEGUNDO RENGLON  
VERSO I]

[SOLO]

[INTRO] x2

[VERSO I]

Black night, black night,  
i don't need black night,  
i can't see dark night.  
maybe i'll find on the way down the line  
that i'm free, free to be me.  
black night is a long way from home.

[PRIMER RENGLON DE VERSO I] Hasta el final